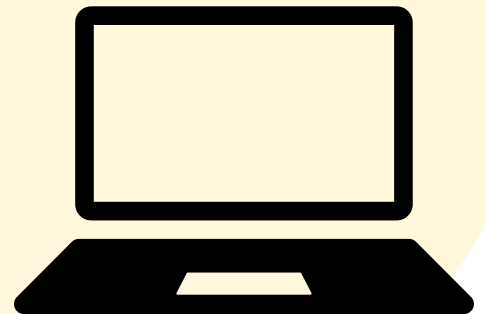
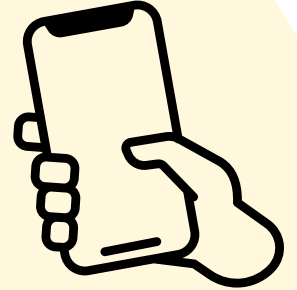


Do you have Sight Loss and struggle with technology?

Did you know we can help with?

- ✔ **accessible apps on your phone or tablet** to help you listen to newspapers, magazines and books.
- ✔ **Advice and demonstrations** on how to access online information on your device
- ✔ **Advice and information** on choosing the best device for you and how to use it.



COME TO OUR NEXT TECH HUB SESSION!

These take place on the 2nd and last Friday of every month from 11am - 1pm at the Central Library, 555 Silbury Boulevard, Central Milton Keynes, MK9 3HL

No appointment needed, just drop in!

Contact Padma for more information.

 **07456 202707**  **pscheriyan@gmail.com**

**Milton Keynes
Sensory Services**

delivered by  **B·I·D SERVICES**
Registered Charity in England 1053184

R N I B

See differently